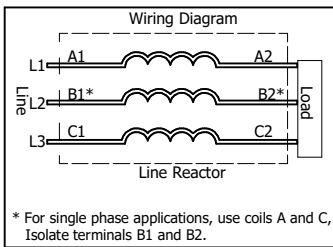
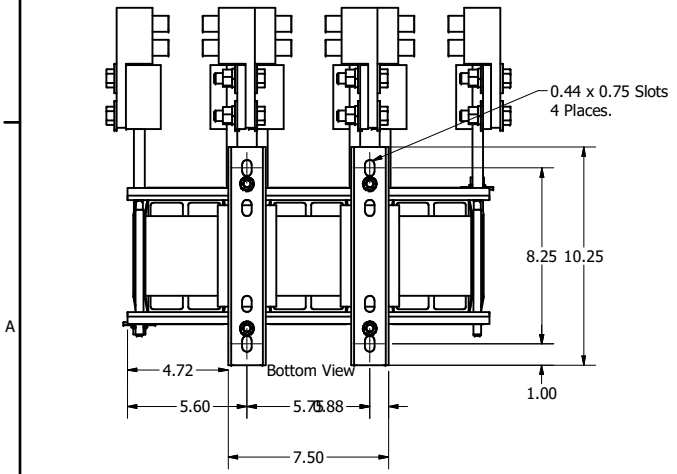
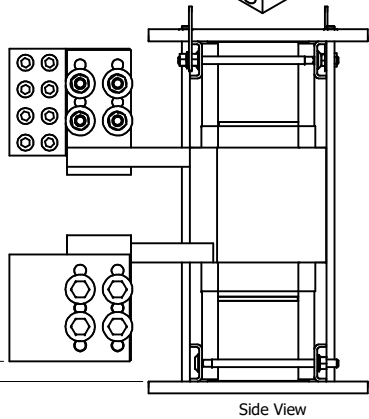
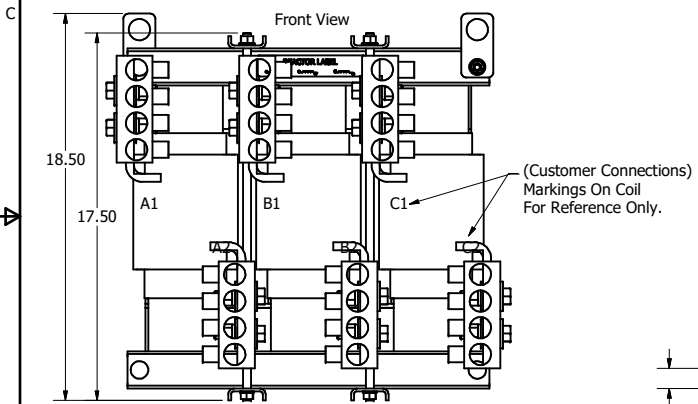


480 Rated Voltage, 600 Max Voltage, High Z, Impedance.						
Part Number	Horsepower (HP)	Motor Amps (A)	Maximum Amps (A)	Inductance (uH)	Weight (LBS)	Attached Lug Kit
KDRULX3H	900	1080	1100	28.9	318	LK17

480 Rated Voltage, 600 Max Voltage, Low Z, Impedance.						
Part Number	Horsepower (HP)	Motor Amps (A)	Maximum Amps (A)	Inductance (uH)	Weight (LBS)	Attached Lug Kit
KDRULX3L	900	1080	1100	17.4	285	LK17
KDRULX1L	1000	1200	1216	15.6	300	LK17

575 Rated Voltage, 600 Max Voltage, Low Z, Impedance.						
Part Number	Horsepower (HP)	Motor Amps (A)	Maximum Amps (A)	Inductance (uH)	Weight (LBS)	Attached Lug Kit
KDRULX43L	1100	1056	1064	21.7	325	LK17
KDRULX44L	1250	1200	1200	19.1	310	LK18

575 Rated Voltage, 600 Max Voltage, High Z, Impedance.						
Part Number	Horsepower (HP)	Motor Amps (A)	Maximum Amps (A)	Inductance (uH)	Weight (LBS)	Attached Lug Kit
KDRULX41H	900	864	864	44.3	320	LK17
KDRULX42H	1000	960	1000	39.8	385	LK17
KDRULX43H	1100	1056	1064	36.2	460	LK17



**TCL** (800) 824-8282 transcoil.com

TCL, LLC  
Garrettsville, WI, USA  
transcoil.com  
800-824-8282

KDRUL Drive Reactor  
KDRUL— Motor Amps —  
3P/1, 50/60Hz, —V Rated, 600V Max, —A Max  
40C Amb Max, 155C Rise, RoHS  
Term Torque— lb-in

UL LISTED  
300-0000-00-0000

DATE CODE: A1 B1 C1

- Note:
1. UL file number: cULus Listed File E116124.
  2. KDR Drive Reactors Comply With The Thermal and Altitude Standards Set Forth by NEMA ST20-1992.
  3. For Terminal Torques And Wire Size See, KDR IOM Manual, Part Number 30895
  4. NEC Current For 208/240 Volts, Horsepower Based On 208 Volts.
  5. Material(s) Shall be RoHS Compliant
  6. Customer Is Responsible For Installation To Meet All National And Local Electrical Codes.

THE INFORMATION AND DESIGNS CONTAINED IN THIS DRAWING ARE CONFIDENTIAL AND THE PROPRIETARY PROPERTY OF ALLIED MOTION TECHNOLOGIES INC. AND ITS SUBSIDIARIES. NEITHER THIS DESIGN NOR ANY INFORMATION CONTAINED IN THIS DRAWING MAY BE REPRODUCED OR DISCLOSED TO OTHERS WITHOUT THE EXPRESS WRITTEN CONSENT OF ALLIED MOTION TECHNOLOGIES INC. AND ITS SUBSIDIARIES.

NO	REVISION	DATE	BY
C	6252. Remove KDRULX4H	4/26/2023	DSW
B	5796. Title blk updated, chg lift ring sides	12/8/2021	DSW
A	Combined Drawing	3/5/2018	DSW

TOLERANCES (EXCEPT AS NOTED)  
DECIMAL  
.XX ± .02  
.XXX ± .10

FRACTIONAL  
± 1/16  
ANGULAR  
± 1°

**TCL** W182N10611 (Rev 1) Feb  
Garrettsville, WI 53022  
© 2021 TCL, LLC

An Official Motors Company  
KDRUL X Frame, Copper Bus  
Reactor Drawing

DWG BY: DSW DATE: 3/5/2018 107539-4DG  
SCALE: 1:3.2 DRAWN BY: CSE SHEET 4 OF 8